



Mounting Kit



Content:

The assembly kit of the Joyreef doser pump is made up of everything needed to mount a 3 or 4 channel Joyreef pump without having to carry out any welding:

3 or 4 Kamoer Kxf peristaltic pumps with welded connector:

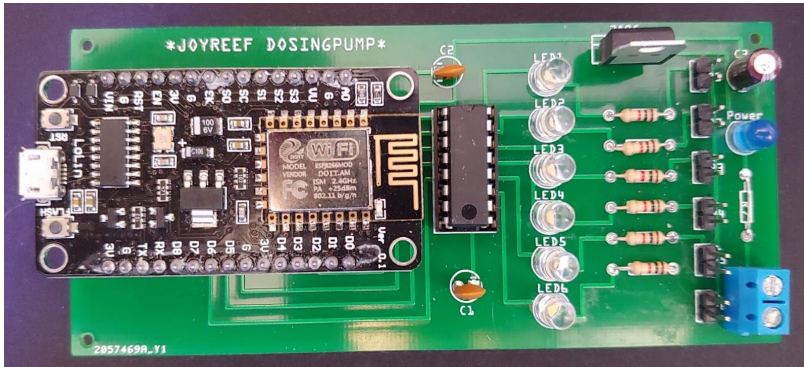


Nodemcu:





PCB:



3D Printed Housing:



Power connector:



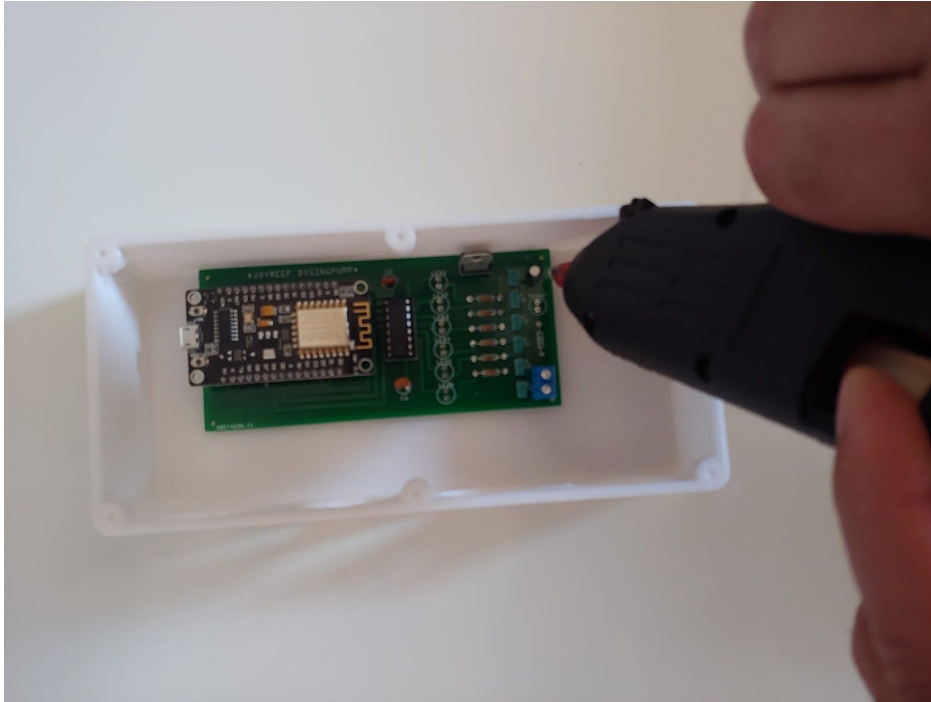
Power supply:



Assembling:



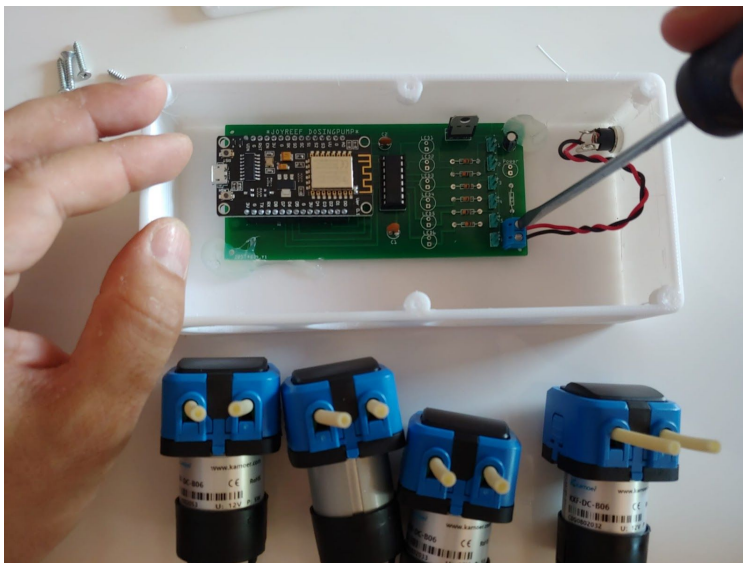
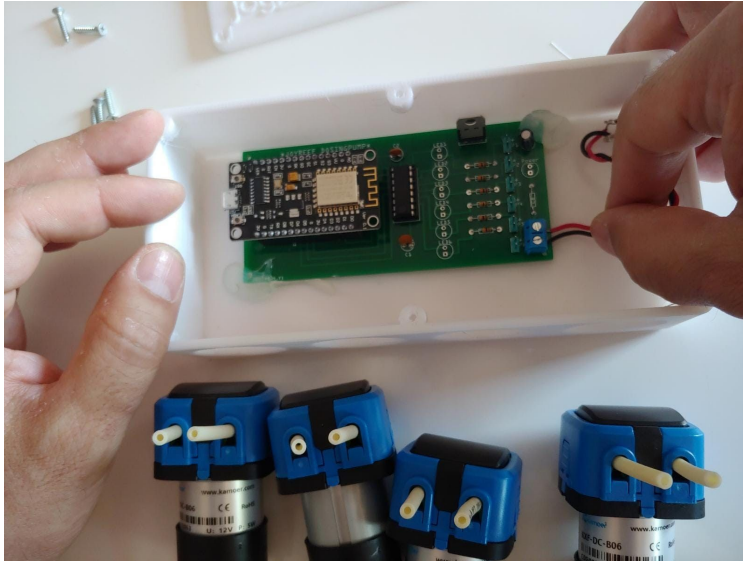
- 1) Fasten the card inside the box, so as to allow the insertion of the heads. Do some tests before finally fixing it. I recommend the use of hot glue in the corners to fix it:



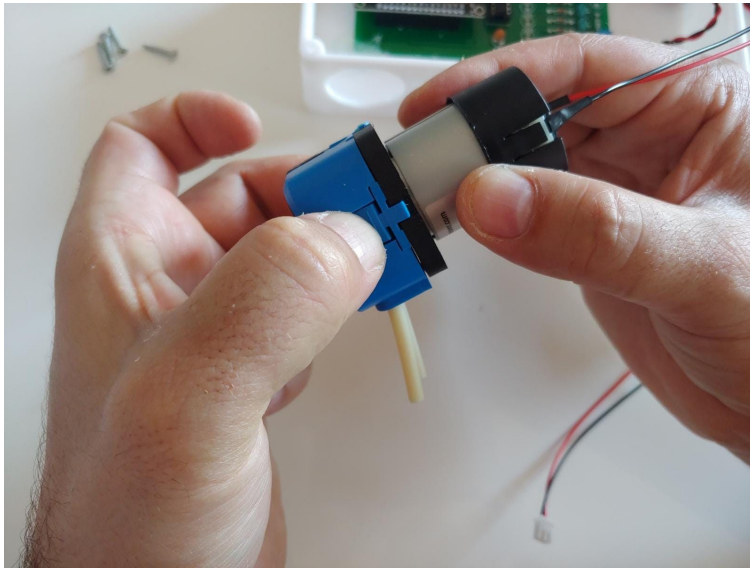
- 2) Insert the power connector inside the side hole and screw it:



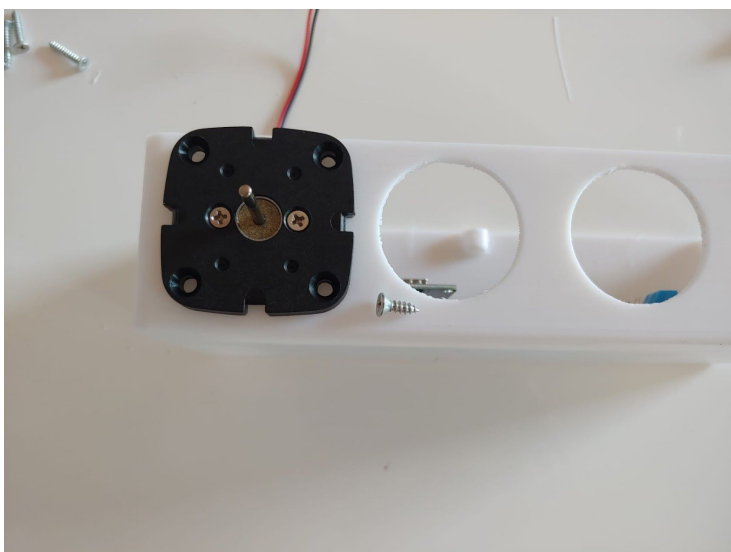
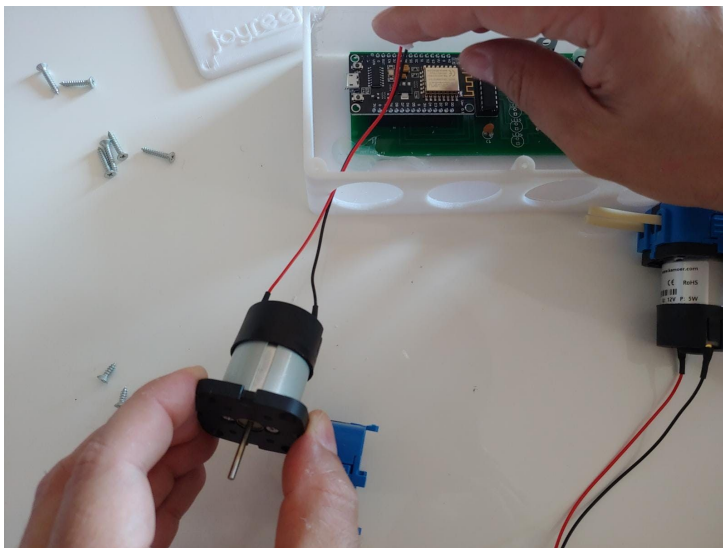
- 3) Insert the power cables inside the terminals of the BLUE connector on the board and screw them (red and black as in the figure)



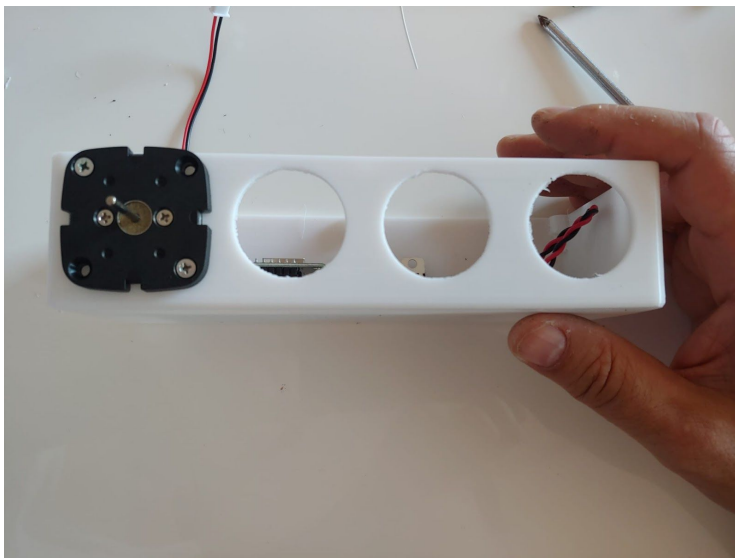
- 4) Release the front of the pumps by pressing the tabs on the sides and pulling:



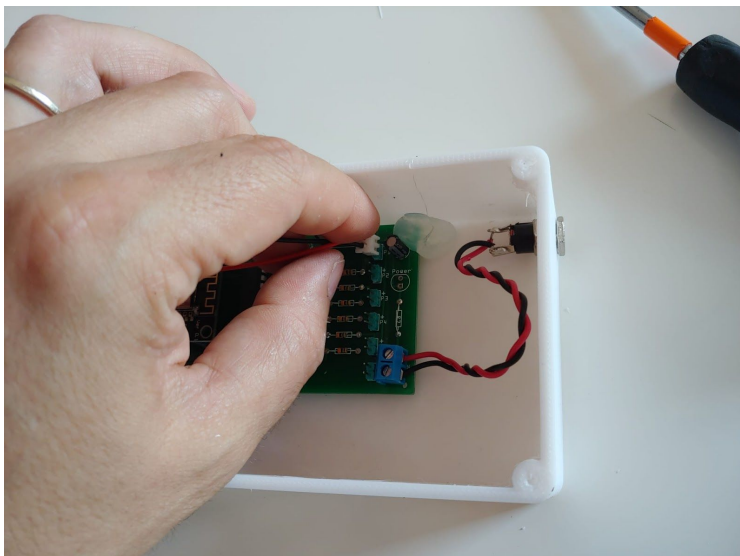
5) Insert the cables inside the hole and the head in its housing:



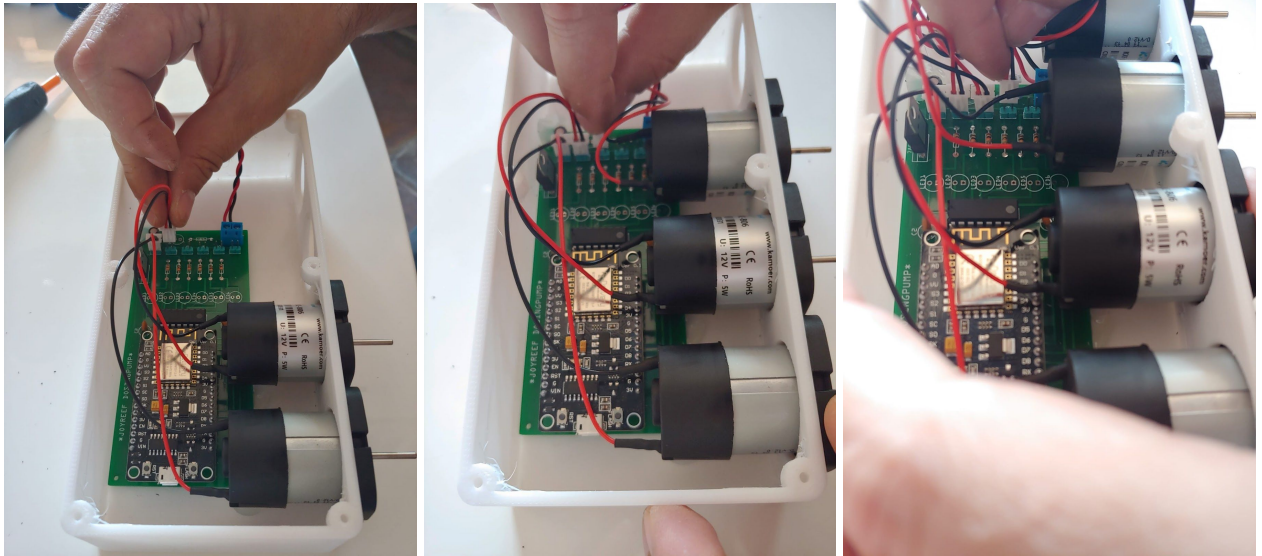
- 6) Use the small screws to screw the head into its housing (Attention because the holes are not present, do not apply too much force). 2 screws for each head.



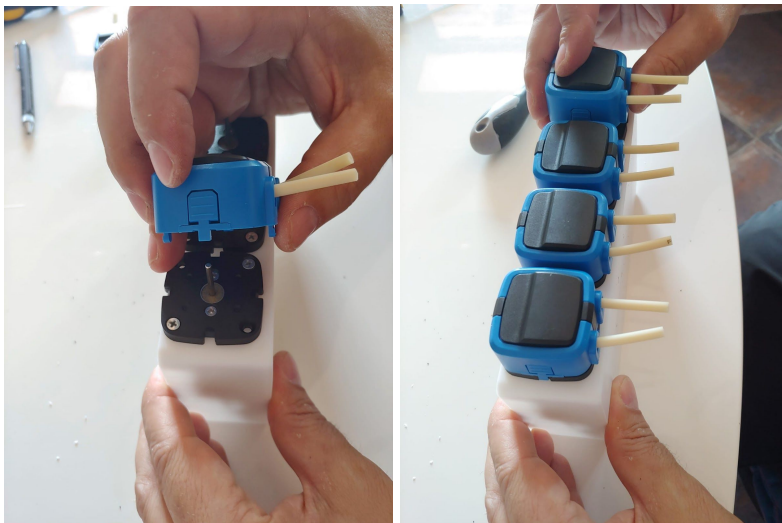
- 8) Connect the connector to the board paying attention to insert it with the red cable upwards:



9) Repeat the operation for all heads



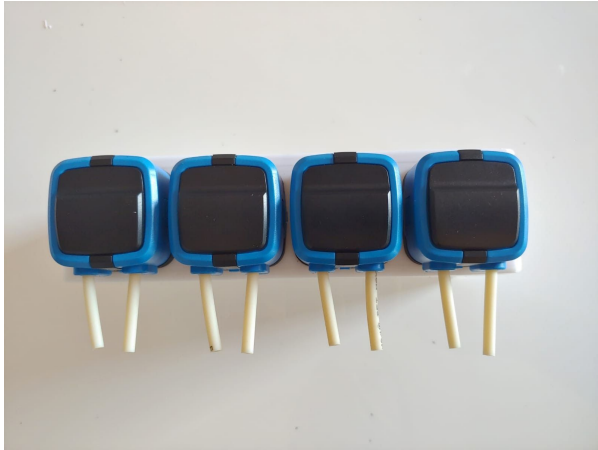
10) Reassemble the front panels to the pumps



11) Use the longer screws to close the box:



Finished!



Now you can configure it following the instruction at:

<https://www.joy-reef.com/en/arduino-dosing-pump-diy-part-3-software/>